

2014-15 Bear and Rice Lake Watershed Improvement Project

Bear Lake Association/Rice Lake Protection and
Rehabilitation District

© 2014 Google

Google earth

What is it?

- Funding (\$70,000.00) from the WDOT and administered by the WDNR provided to the BLA and RLPRD to offset damages caused by runoff issues from the Hwy 53 & V Interchange Construction Site
- To be used to complete nutrient and sediment reduction projects in the two watersheds.
- Projects determined by the two organizations with assistance from Barron and Washburn County, City of Rice Lake, and Project Consultants
- Projects not really limited, but must be approved by the WDNR





EXPLANATION

- County
- Town or Village
- Rice Lake Watershed
- Drainage Area of Concern

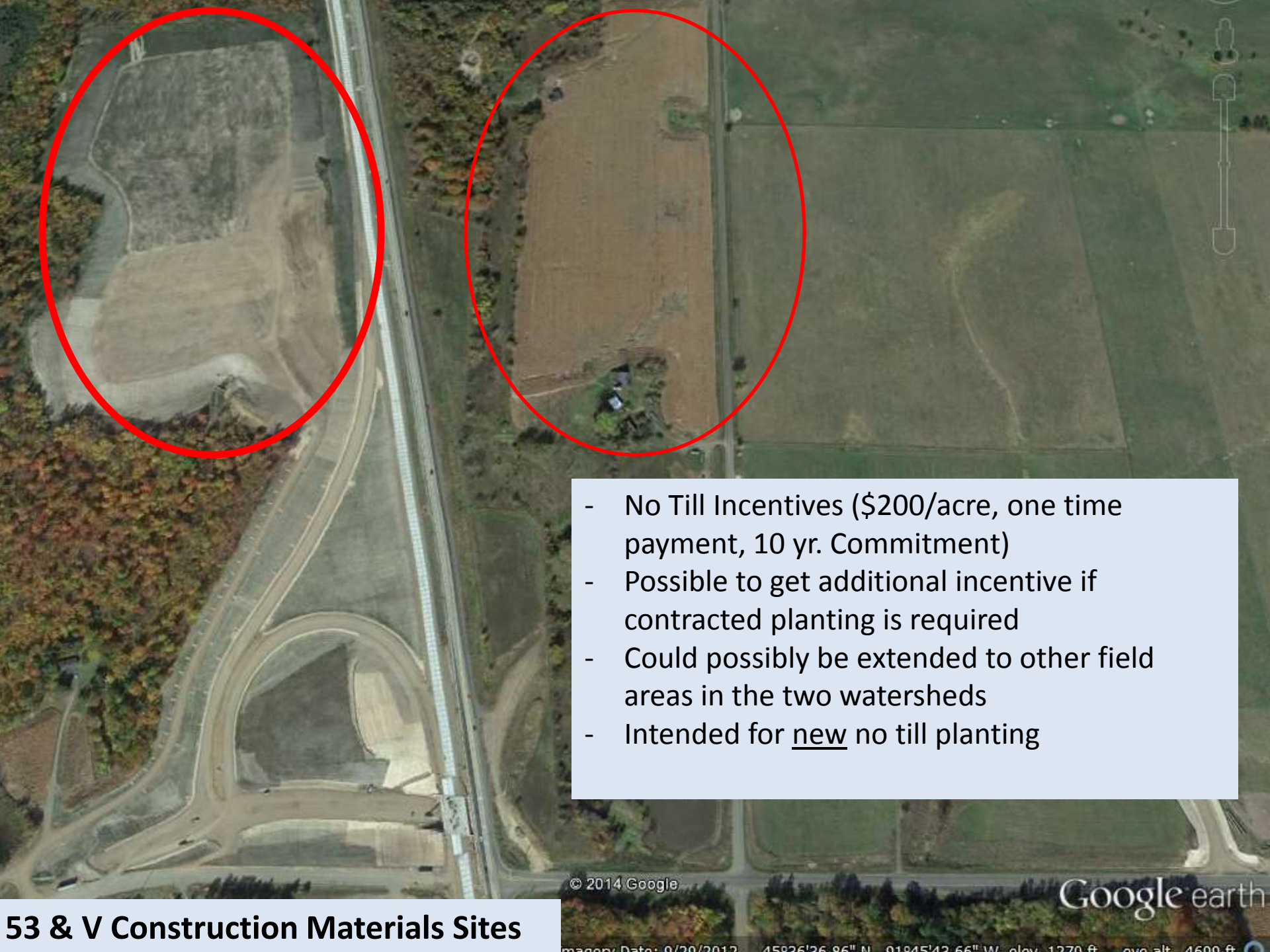


Why?

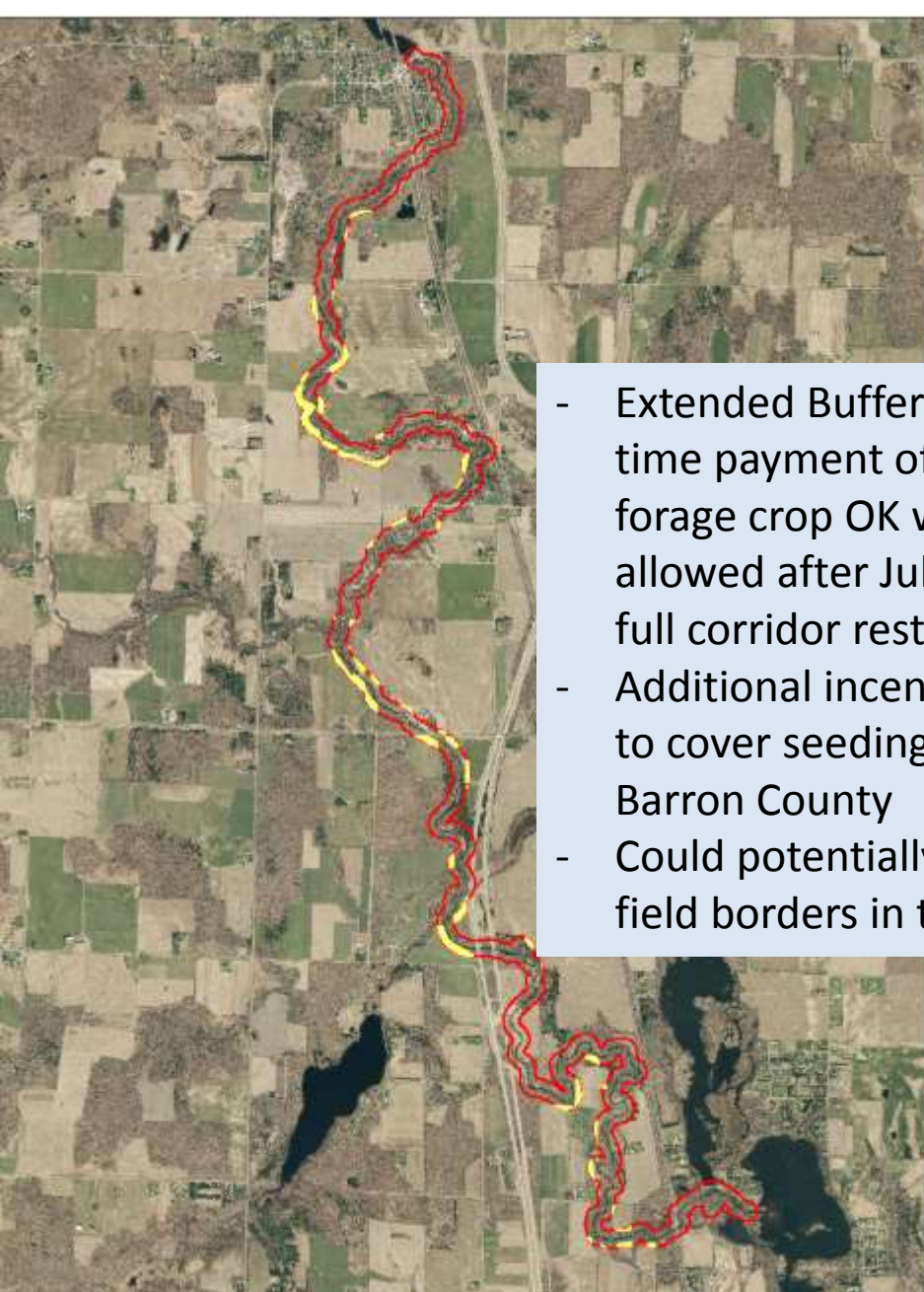
- Reduce current and future sediment and nutrient loading from the greater watersheds into Bear Lake and Rice Lake
- Support best management practices that help farmers keep valuable soil on the fields where it belongs and that will not harm the bottom line
- Minimize planning and use this “unexpected” funding for immediate implementation

Current Projects

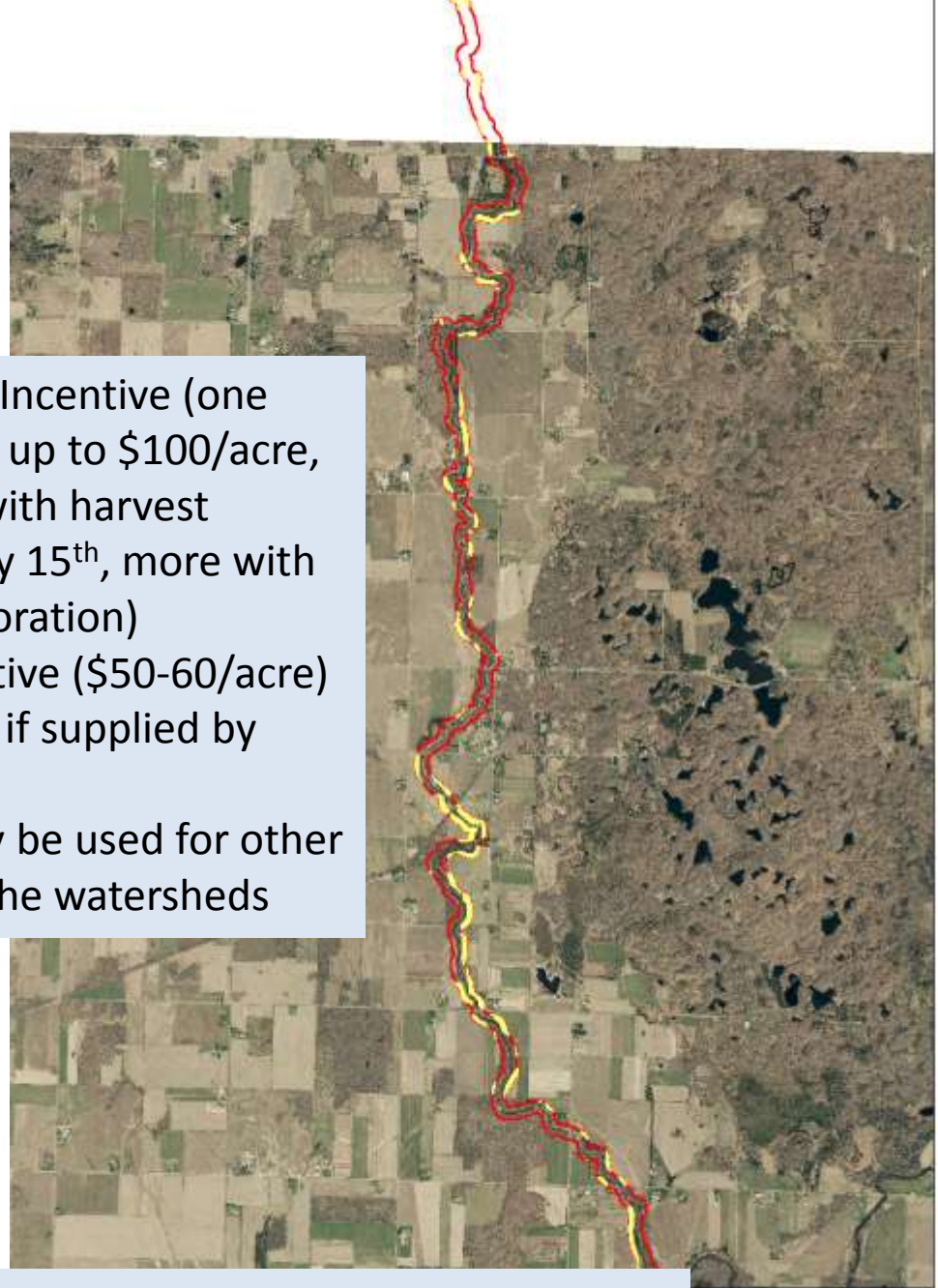
- Securing of construction material dump sites in the immediate area of the interchange site
- Bear Creek/Brill River Habitat Improvement-Extended Buffers
- Bear Lake Boat Landing Improvement
- Agricultural Grassed Waterways (primarily in the “super” waterway)
- Installation of Grit Chamber on Humbird Street in Rice Lake
- Individual Farm Projects: Stodola & North Star
- **Other Projects will and are being considered**



- No Till Incentives (\$200/acre, one time payment, 10 yr. Commitment)
- Possible to get additional incentive if contracted planting is required
- Could possibly be extended to other field areas in the two watersheds
- Intended for new no till planting




- Extended Buffer Incentive (one time payment of up to \$100/acre, forage crop OK with harvest allowed after July 15th, more with full corridor restoration)
- Additional incentive (\$50-60/acre) to cover seeding if supplied by Barron County
- Could potentially be used for other field borders in the watersheds



Bear Creek and Brill River Extended Buffers and Habitat Improvement

A gravel path leads from the foreground towards a body of water. The path is covered with small, light-colored stones and is scattered with many fallen autumn leaves in shades of yellow, orange, and brown. On either side of the path, there is green grass and some shrubs. In the background, the blue water of the lake meets the shore, with a small white wave visible. The sky is not visible in the frame.

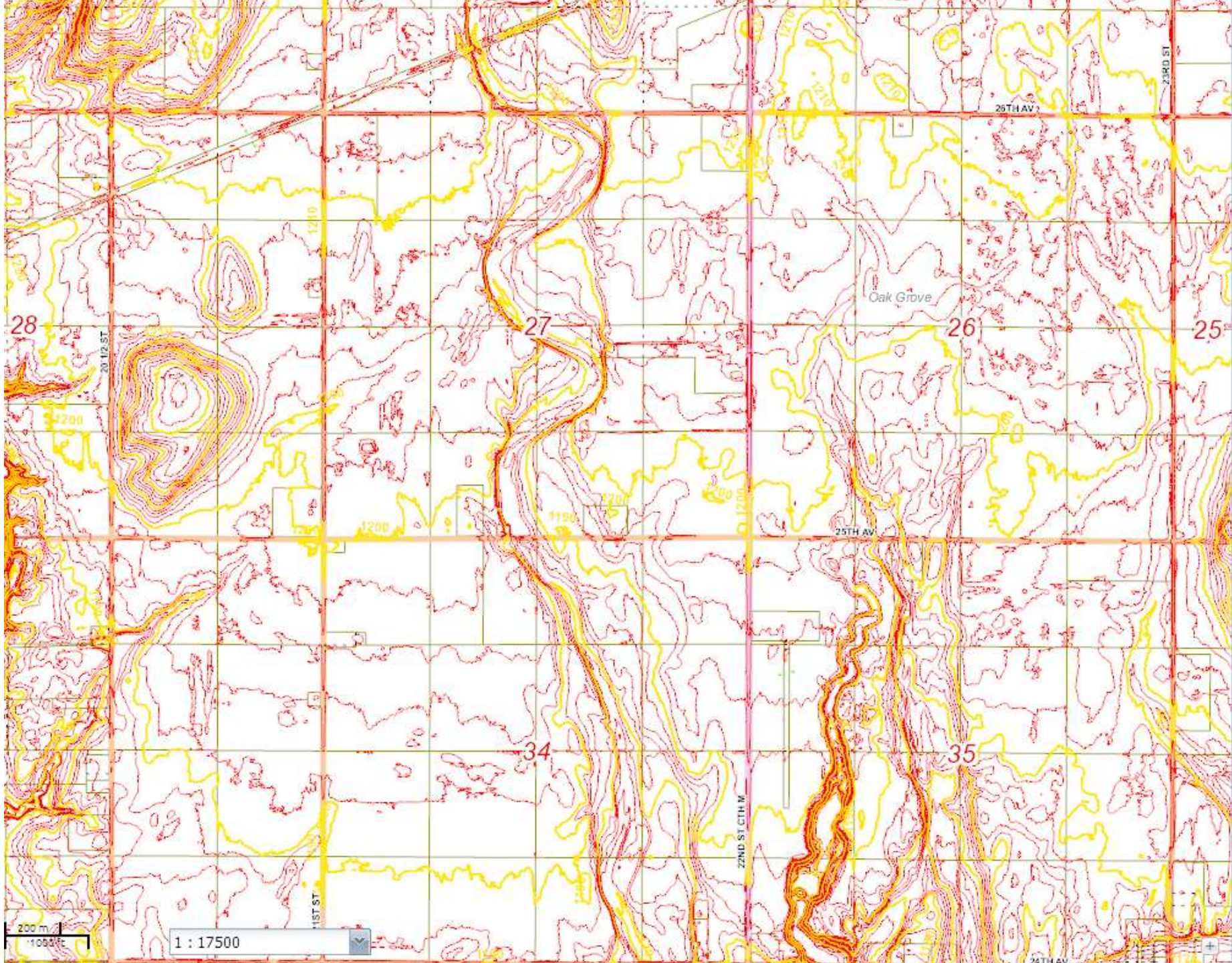
Washburn County Bear Lake Landing, October 2013

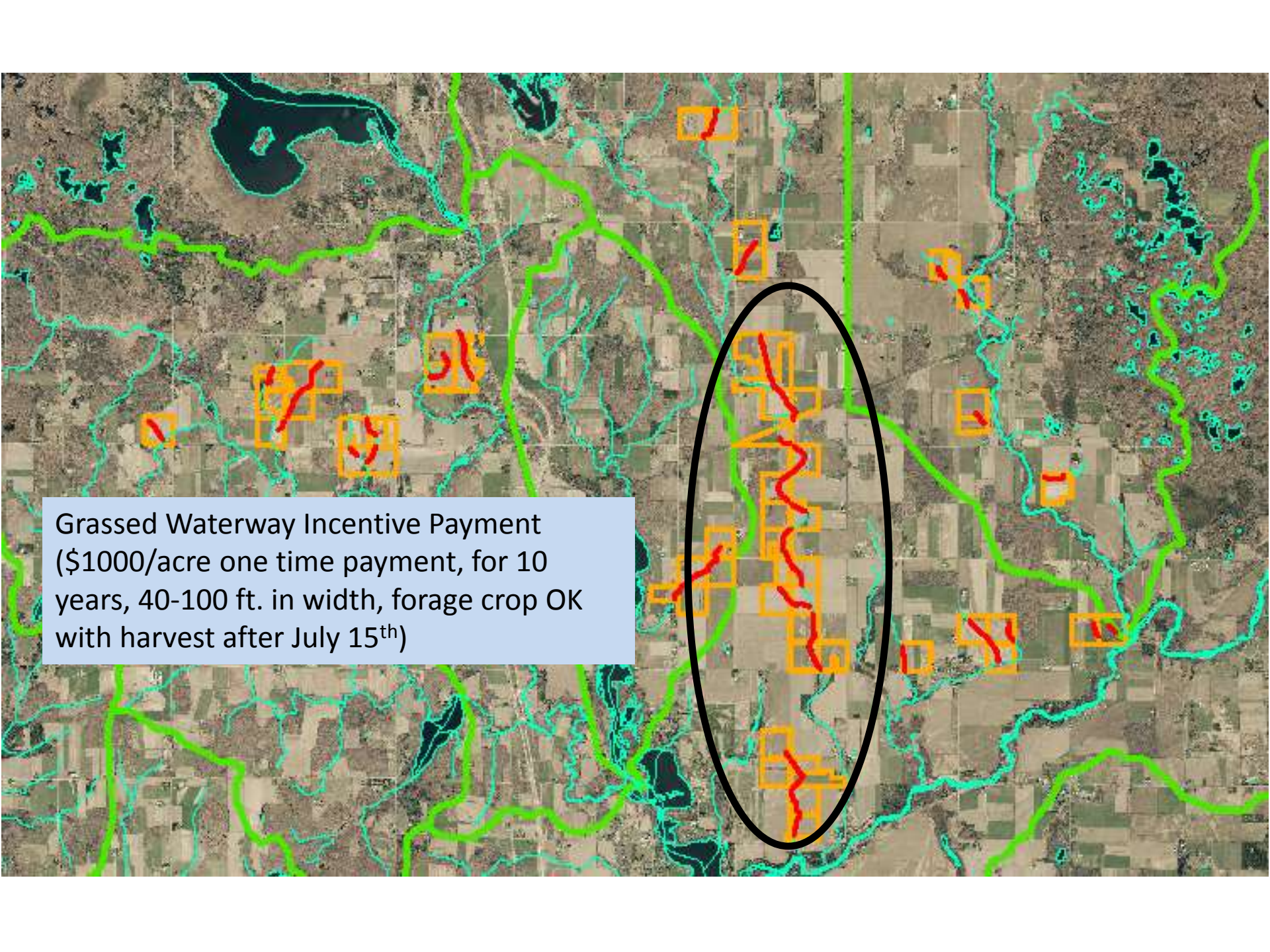
A satellite map of a rural landscape, likely in the Midwest, showing a patchwork of agricultural fields in various shades of brown, tan, and green. A prominent red line is drawn across the map, starting from the top left and winding its way towards the bottom right, following a path that appears to be a waterway or a specific land management boundary. In the top right corner, there is a small circular inset showing a zoomed-in view of a specific area, and a vertical scale bar is visible next to it.

Grassed Waterways in the Super Waterway



Dobie





Grassed Waterway Incentive Payment
(\$1000/acre one time payment, for 10
years, 40-100 ft. in width, forage crop OK
with harvest after July 15th)

City of Rice Lake Stormwater Reduction Projects

Individual Farm Projects

- Barnyard waterways
- Nutrient Management Plans
- Erosion control
- Streambank fencing
- Highly erodible area protection
- Will entertain other projects, but all projects must be approved by the Lake Groups, County, and WDNR to move forward with implementation

- 1) What interest level is there in participating in these projects?
- 2) What other ideas do you have?
- 3) What will it take to get participation?
- 4) Is there any representative from the farming and recreation community that would be willing to be a part of a Stakeholders Project Discussion group?

***Additional funding could be available from a grant applied for by the RLPRD if participation warrants it.**